

punto  
39

linello

LANG

Y A R N S

2539.0001

CHF 4.50 € 3.95

[www.langyarns.com](http://www.langyarns.com)

**LANG**  
Y A R N S



**1 LINELLO**

**LANG**  
Y A R N S

## LINELLO

40% Leinen, 32% Baumwolle, 28% Viskose  
40% Linen, 32% Cotton, 28% Viscose  
40% Lin, 32% Coton, 28% Viscose

Laufänge ca. 280m/100g  
approx. 280m/100g  
ca. 280m/100g

NN 3.5-4  
NN 3.5-4 (US 4-6, UK 10-8)  
NN 3.5-4

Farben überraschen immer wieder neu. Linello ist ein wunderschönes Garn aus Leinen, Baumwolle und einem geringen Anteil an Viskose. Die Komposition ist nicht nur atemberaubend, sondern es ist auch ein atmungsaktives Material. Perfekt für heiße Sommertage und laue Abende.

The colours are ever surprising. Linello is a beautiful yarn made of linen, cotton and just a small percentage of viscose. The composition is not only breath-taking but it's also breathable material. Perfect for hot summer days and balmy evenings.

Les couleurs ne cessent de nous surprendre. Linello est un sublime fil composé de lin, de coton et d'un tout petit peu de viscose. Des fibres non seulement époustouflantes mais qui font de ce fil un produit respirant. Parfait pour les chaudes journées et les douces soirées d'été.



**LANG**  
Y A R N S





**LANG**  
Y A R N S



**3 LINELLO**

**LANG**  
Y A R N S



**LANG**  
Y A R N S







**LANG**  
YARN S



**5 LINELLO**





**LANG**  
Y A R N S



**6 LINELLO**









**LANG**  
Y A R N S









**LANG**  
Y A R N S

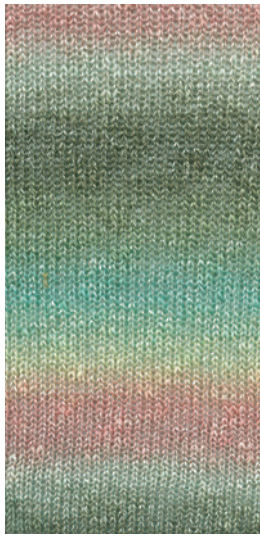


**TO LINELLO**



**LANG**  
Y A R N S





**1066.0052**



**1066.0050**



**1066.0015**



**1066.0017**



**1066.0009**



**1066.0010**



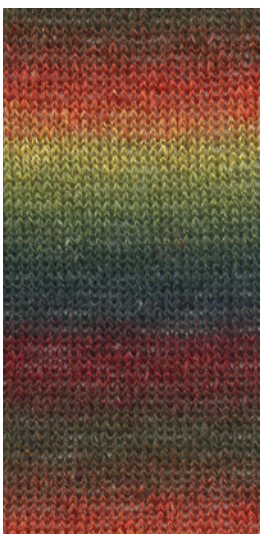
**1066.0025**



**1066.0053**



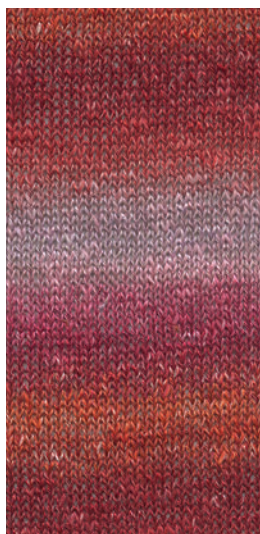
**1066.0054**



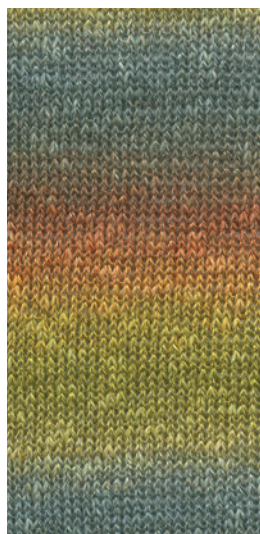
**1066.0055**



**1066.0056**



**1066.0065**



**1066.0115**





## **LANG & CO. AG**

Mühlehofstrasse 9  
CH-6260 Reiden  
Tel. D +41 62 749 01 01  
Tél. F/I +41 62 749 01 02  
Fax +41 62 749 01 09  
info@langyarns.com  
www.langyarns.com

## **EU-Staaten**

LANG Garn & Wolle GmbH  
Modische Handstrickgarne  
Püllenweg 20  
D-41352 Korschenbroich  
Tel: Deutsch +49 2161/67451 + 67452  
Tél: Français +49 2161/574 9122  
Fax +49 2161/67 22 76  
info.de@langyarns.com  
www.langyarns.com

## **Italy**

MEZ Cucirini Italy S.r.l.  
Via Milanese, 20  
I-20099 Sesto San Giovanni (MI)  
Tel. +39 02 64109080  
Fax +39 02 6433541  
servizio.clienti@mezitalia.it

## **Russian Federation**

Gela Ltd.  
Vladenie 13b  
Vashutinskoje Shosse  
141400 Chimki Moskau  
Tel. +7 495 742 50 43  
gela@gela.ru  
www.gela.ru

## **Canada**

ESTELLE DESIGNS AND SALES LIMITED  
Units 65/67  
2220 Midland Avenue  
Scarborough  
Ontario Canada M1P 3E6  
Phone +1 416 298 9922  
Fax +1 416 298 2429  
info@estelledesigns.ca  
www.estelleyarns.com

## **USA**

Berroco, Inc.  
1 Tupperware Drive, Suite 4  
North Smithfield, RI 02896 USA  
Phone +1 401-769-1212 x 100  
+1 800-343-4948  
Fax +1 401-769-1313  
info@berroco.com  
www.berroco.com

## **China**

EXCEL NEEDLECRAFT  
(SHANGHAI) CO., LTD.  
ROOM 701, NO.1, LANE 829  
WANHANGDU RD, JINGAN DIST  
CN-SHANGHAI 200042  
Phone +86-21-6232-3601  
Fax +86-21-6232-3678  
cqcl@ms17.hinet.net  
www.icraft.com.cn

## **Taiwan**

Cactus Quality Co. LTD.  
7FL-2, NO. 140, SEC.2  
Roosevelt RD.,  
TW-10084 Taipei  
Phone +886-2-2365-6527  
Fax +886-2-2365-6503  
cqcl@ms17.hinet.net  
www.excelcraft.com.tw

## **Thailand**

Global Wide Trading Co Ltd  
10 Lad Prao 88 Road  
Bangkok 10310 Thailand  
Phone +662 933 9019  
Fax: +662 933 9110  
Global.Wide@yahoo.com

## **Korea**

Knitvillage  
7-dong, 35 Songhak 1-gil,  
Paju-si, Gyeonggi-do, Korea  
Phone +82 (0) 31 944 4106/5  
Fax +82 (0) 31 947 4106  
Mobile +82 (0) 10 5242 4106  
knittking@gmail.com  
www.knitvillage.co.kr

**LANG**  
Y A R N S

